

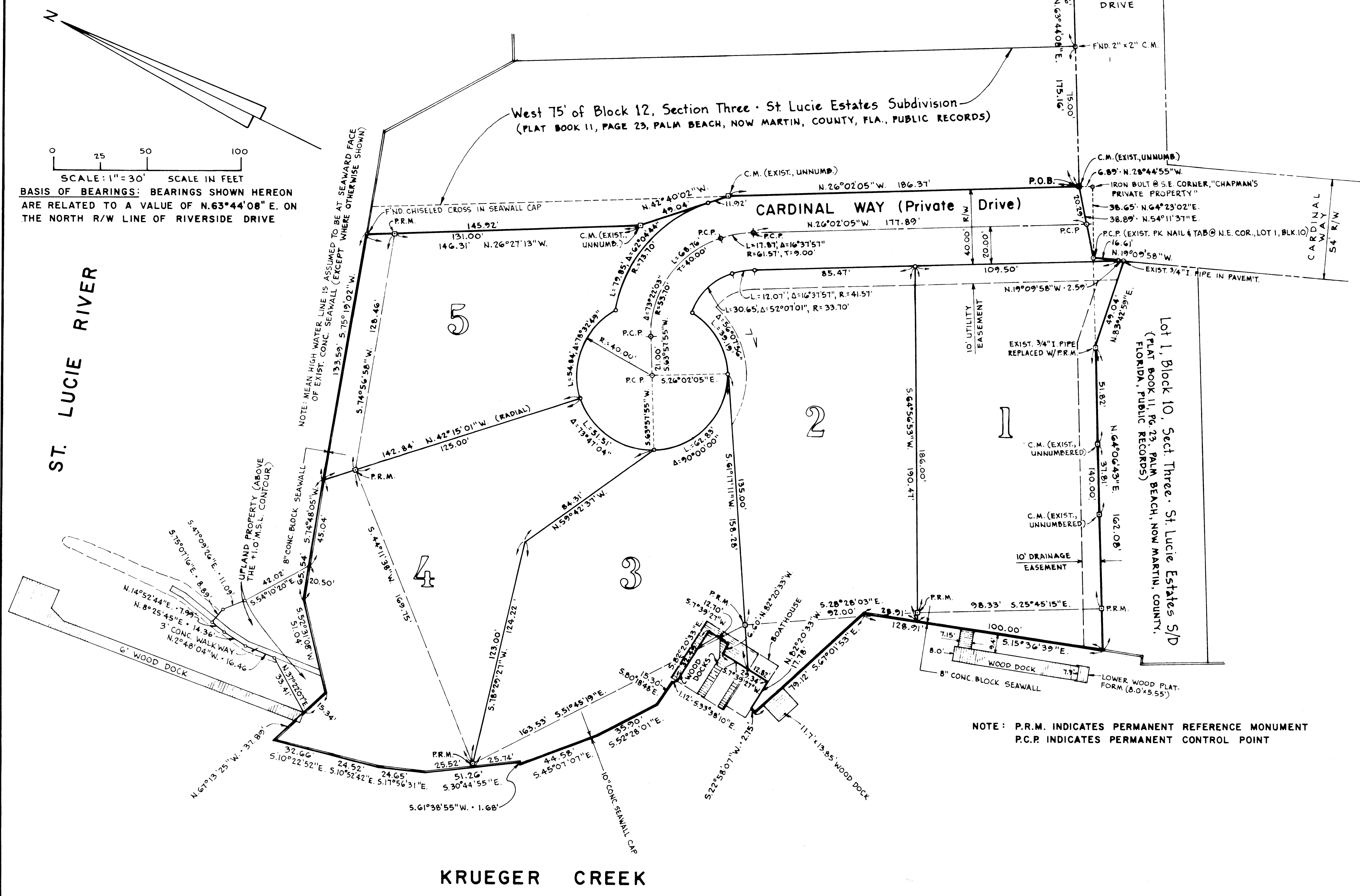
RAND POINT

A SUBDIVISION OF A PART OF "CHAPMAN'S PRIVATE PROPERTY" SHOWN ON THE PLAT OF SECTION THREE - ST. LUCIE ESTATES SUBDIVISION, PLAT BOOK II, PAGE 23, PALM BEACH (NOW MARTIN) COUNTY, FLORIDA, PUBLIC RECORDS, TOGETHER WITH PORTIONS OF BLOCKS 10 AND 12 OF SAID PLAT OF SECTION THREE - ST. LUCIE ESTATES SUBDIVISION

CLERK'S RECORDING CERTIFICATE
 I, MARSHA STILLER, CLERK OF THE CIRCUIT COURT OF MARTIN COUNTY, FLORIDA, HEREBY CERTIFY THAT THIS PLAT WAS FILED FOR RECORD IN PLAT BOOK 10, PAGE 79, MARTIN COUNTY, FLORIDA PUBLIC RECORDS, THIS 16th DAY OF JUNE, A.D., 1987
 MARSHA STILLER, CLERK
 CIRCUIT COURT
 MARTIN COUNTY, FLORIDA
 BY _____
 DEPUTY CLERK
 FILE NO.
661063

THIS INSTRUMENT PREPARED BY:
 ARTHUR SPEEDY
 FOR:
 C. CALVERT MONTGOMERY & ASSOCIATES, INC.
 ENGINEERS
 P. O. BOX 92, STUART, FLORIDA 33495

JUNE, 1987



SCALE: 1"=30' SCALE IN FEET
 BASIS OF BEARINGS: BEARINGS SHOWN HEREON ARE RELATED TO A VALUE OF N.63°44'08" E. ON THE NORTH R/W LINE OF RIVERSIDE DRIVE

NOTE: MEAN HIGH WATER LINE IS ASSUMED TO BE AT SEAWARD FACE OF EXIST. CONC. SEAWALL (EXCEPT WHERE OTHERWISE SHOWN)

NOTE: P.R.M. INDICATES PERMANENT REFERENCE MONUMENT
 P.C.P. INDICATES PERMANENT CONTROL POINT